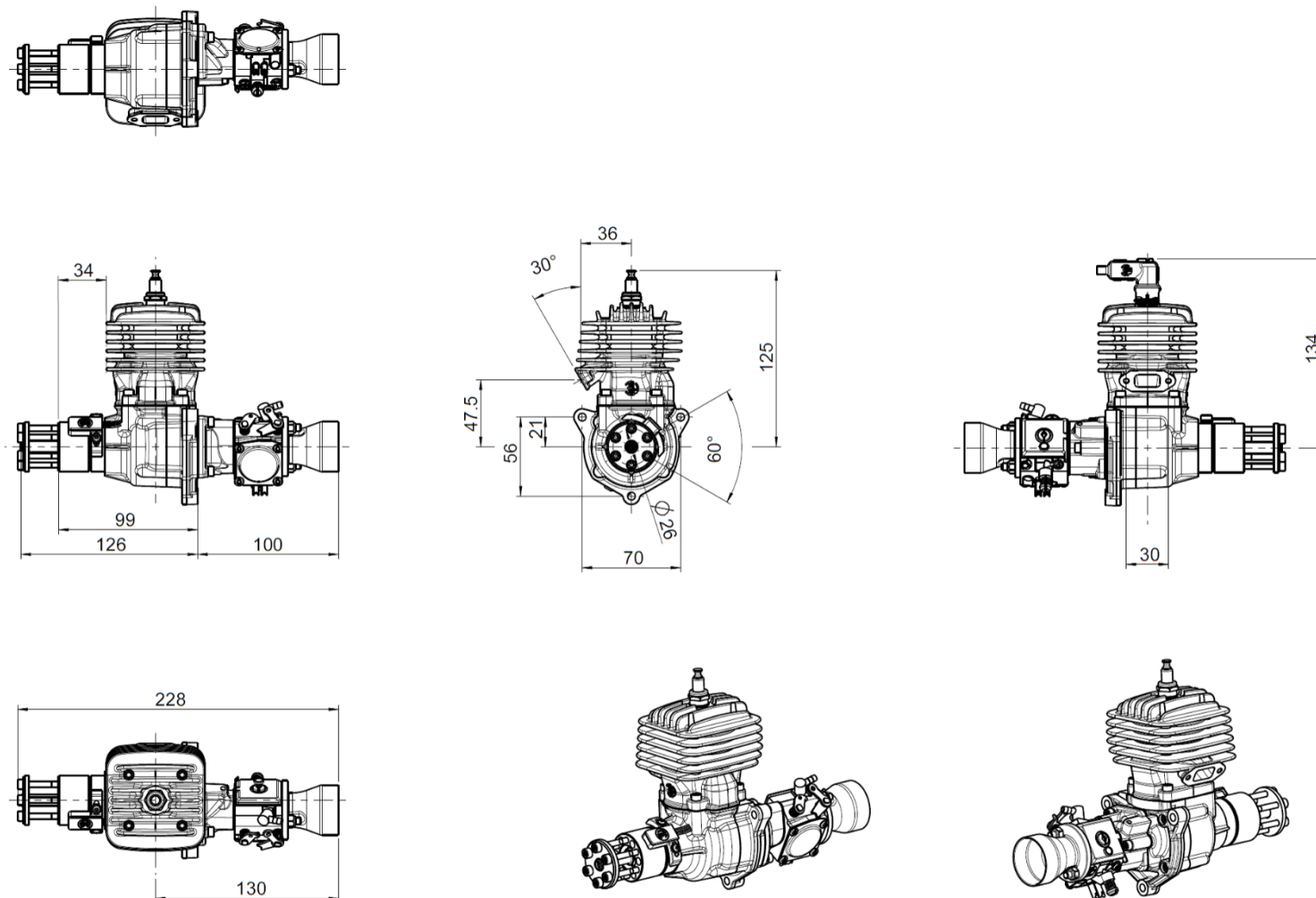




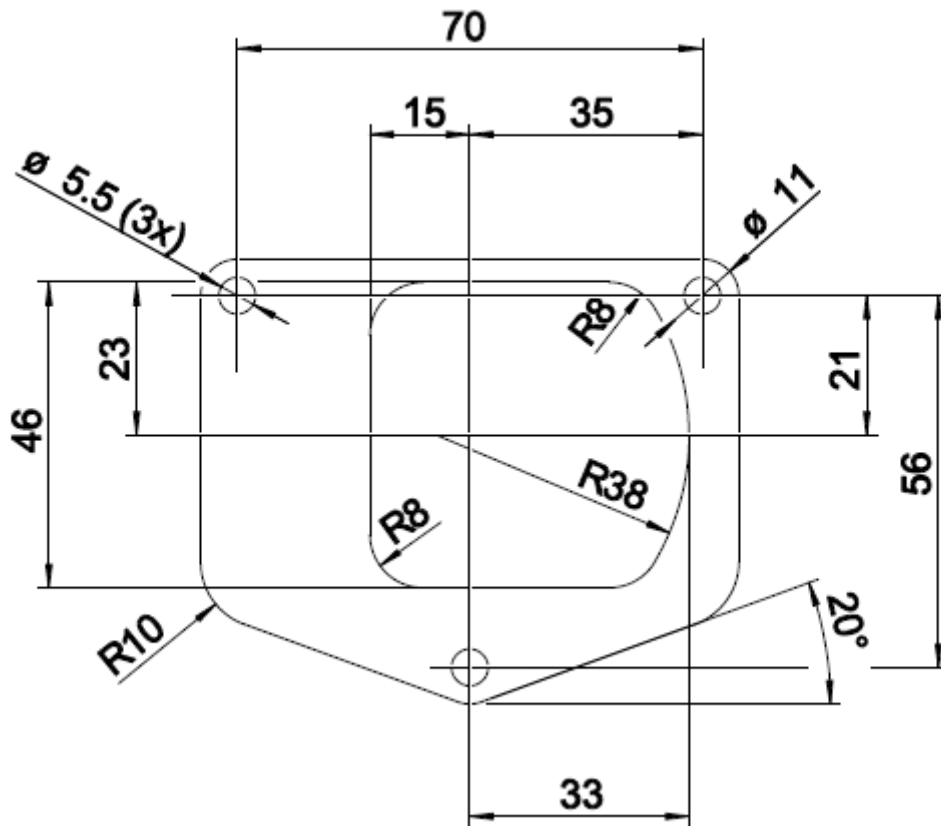
Annex A
3W-28i CS



1. 3-view drawing



2. Drilling template





3. Specifications

	3W-28i CS
Cylinder capacity	28.50 ccm
Power	3.6 HP (2,65 KW)
Bore diameter	36.00 mm
Stroke	28.00 mm
Speed range	1,500 – 8,500 rpm
Weight, incl. ignition	1,210 g
Crankshaft	3 Kugellager
Rods	3 ball bearing
Oil / gasoline ratio	Needle bearings at both ends
IIS – ignition	1 : 50 – 1: 80 (min. 92 Octan)
2-blade propeller	18 x 8 wood part number 10.101.501 18 x 10 wood part number 10.101.505 20 x 8 wood part number 10.101.513
3-blade propeller	17 x 10 CFK part number 10.101.701